

DH87X Double Door Grooved Check Valve PN16

Product Description

Connection Ends
Groove to ISO 6182

Working Pressure
PN16

Temperature Range
0°C - 100°C

Coating
Fusion Bonded Epoxy Coating in accordance with ANSI/AWWA C550

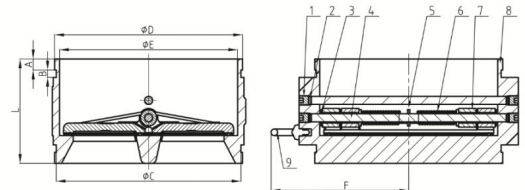


Materials of Construction

Part No.	Part	Standard Specification
1	Countersunk Hex Head Screws	Carbon Steel Zinc Plated
2	Seal Ring	EPDM
3	Gasket	PTFE
4	Shaft	SS420
5	Gasket	PTFE
6	Spring	SS304
7	Disc	SS304
8	Body	EN-GJS-450-10
9	Eye Bolt	Carbon Steel Zinc Plated

Dimensions (in mm)

Inch	mm	A	B	C	D	E	F	L
8"	219.1	19.1	11.1	214.4	219	200	165	160
10"	273	19.1	12.7	268.28	273	253	203	180
12"	323.9	19.1	12.7	318.29	324	307	228	180
14"	377	23.8	12.7	371.1	377	354	258	200



Notes

1. Product images are for illustration purposes only. Actual product may vary.

2. Actual dimensions may change over time, due to continual design improvements. Please confirm before placing order.