

BSCV Brass Swing Check Valve Screwed

Product Description

HSN 84818090

Product : Sant Brass Swing Check Valve
Body Material : Brass
Type of Disc : Brass
End Details : Screwed ends with BSP Parallel Threads

Testing & Certification

Body Test Pressure : 20kg/cm²g (Hyd.)
Working Pressure : 13.5kg/cm²g (Hyd.)

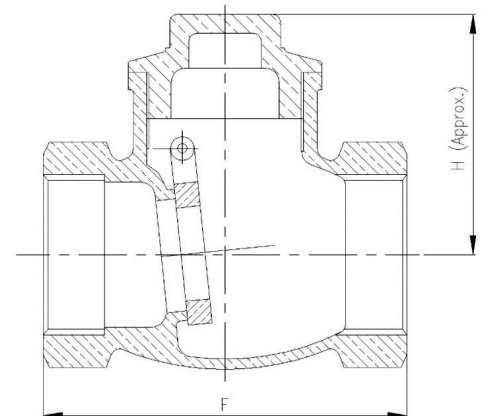


Materials of Construction

Components	Materials	Specifications
Cover	Brass	-
Body	Brass	-
Hinge Pin	Brass	-
Disc	Brass	-

Dimensions (in mm)

Size	F±2	H
15	47	33
20	55	34
25	61	43



Notes

- Product images are for illustration purposes only. Actual product may vary.
- Actual dimensions may change over time, due to continual design improvements. Please confirm before placing order.