

## DP2 Dual Plate Water Check Valve

### Product Description

HSN 84813000

Product : Sant Dual Plate Wafer Check Valve  
 Pressure Rating : PN-25  
 Body Material cum Standard : Ductile Iron  
 Product Description : Wafer Type Spring Loaded  
 Type of Seat : EPDM Rubber Lining  
 Type of Disc : SS 304 (CF-8)  
 Trim : Spring & Pins SS  
 End Details : Wafer type suitable for clamping between flanges as per ASME B 16.5 Class-150



### Testing & Certification

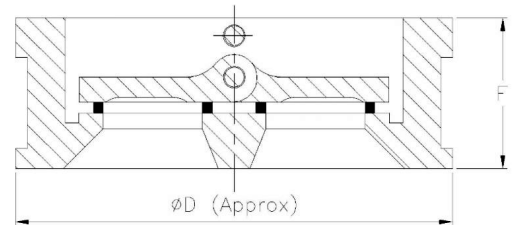
Body Test Pressure : 3.8 MPa Hyd.  
 Seat Test Pressure : 2.7 MPa Hyd.

### Materials of Construction

Components	Materials	Specifications
Body	Ductile Iron	-
Body Seat	E.P.D.M	-
Disc	CF-8	-
Hinge Pin	SS	-
Stop Pin	SS	-
Spring	Spring Steel	-
Bush	P.T.F.E	-
Plug	Carbon Steel	-

### Dimensions (in mm)

Size	F±2	D
50	43	107
65	46	127
80	64	142
100	64	168
125	70	193
150	76	223
200	89	283
250	114	340
300	143	390



### Notes

1. Product images are for illustration purposes only. Actual product may vary.

2. Actual dimensions may change over time, due to continual design improvements. Please confirm before placing order.