

CR-22B Cast Iron Butterfly Valve Wafer Type (ISI Marked)

Product Description

HSN 84818030

Product : 'SANT' Cast Iron Butterfly Valve
 Type of Pattern : Medium Pattern
 Product Standard : IS:13095
 Pressure / Class / Rating : PN 10/PN 16
 Body Material cum Standard : Cast Iron IS:210 Gr.FG200
 Description : Wafer Type
 Type of Seat : Nitrile / EPDM Lining
 Type of Disc : SS CF8
 Trim : SS AISI-410
 End Details : Suitable insertion between Flanges as per BS 10 Table D/E ANSI B 16.1 Class - 125



Testing & Certification

Ratings:

PN10
 Body Test Pressure : 1.5MPa (218 Psig) Hyd
 Seat Test Pressure : 1.1MPa (160 Psig) Hyd

PN16
 Body Test Pressure : 2.4MPa (348 Psig) Hyd
 Seat Test Pressure : 1.8MPa (261 Psig) Hyd

Our Works' Test Certificate is furnished with every supply.

Application

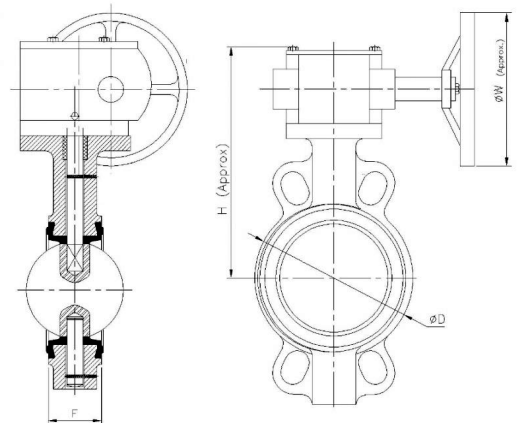
Water

Materials of Construction

Components	Materials	Specifications
Body	Cast Iron	IS:210 Gr.FG260
Disc	Stainless Steel	ASTMA 351 Gr.CF8
Shaft	Stainless Steel	AISI-410/ IS:6603: 12cr12
Seat	Rubber	Nitrile / EPDM Lining
Gear	M.S.	—
Lever / Handwheel	M.S. / D.I.	—

Dimensions (in mm)

Nominal Size	Nominal Size (Inches)	F	ØD	H (Approx.)	ØW (Approx.)
200	8	60±2	260	335	240
250	10	68±2	315	375	240
300	12	78±3	375	400	285
350	14	92±3	418	475	355
400	16	102±3	470	505	355
450	18	114±3	525	580	450
500	20	127±3	575	625	625
600	24	154±3	690	700	625



Notes

1. Product images are for illustration purposes only. Actual product may vary.
2. Actual dimensions may change over time, due to continual design improvements. Please confirm before placing order.