

## WM6 Single Jet Dry Type Water Meter

### Features

- Dry register and register with 5 or 8 numbered roller.
- Brass body can be painted or nickel coated.
- High accuracy.
- Measuring unit is m<sup>3</sup>
- The meters conform to ISO4064 Standard Class B.

### Working Conditions

- Water temperature ≤ 30°C; hot water meter ≤ 90°C
- Water pressure ≤ 1MPa (PN:1.6MPa/16bar)
- ΔP < 0.1MPa

### Accuracy

- From minimum flow-rate (Q<sub>min</sub>) inclusive, to transitional flow-rate (Q<sub>t</sub>), exclusive: ±5%
- From transitional flow-rate (Q<sub>t</sub>) inclusive, to overload flow-rate (Q<sub>s</sub>), exclusive: ±2%  
(Hot water meter: ±3%)

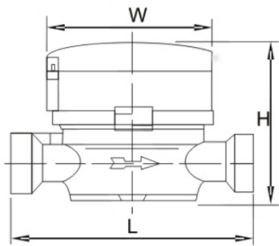


### Dimensions (in mm)

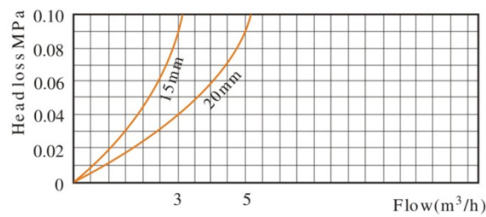
Size	Length L	Width W	Height H	Connecting Thread D
15	110	78	65	G 1/4" B

### Technical Data

Nominal Size DN (mm)	Class of measurement	Overload flow-rate Q <sub>s</sub> (m <sup>3</sup> /h)	Permanent flow-rate Q <sub>p</sub> (m <sup>3</sup> /h)	Transitional flow-rate Q <sub>t</sub> (l/h)	Minimum flow-rate Q <sub>min</sub> (l/h)
15	B	3	1.5	120	30



Head Loss Curve



Error Curve

